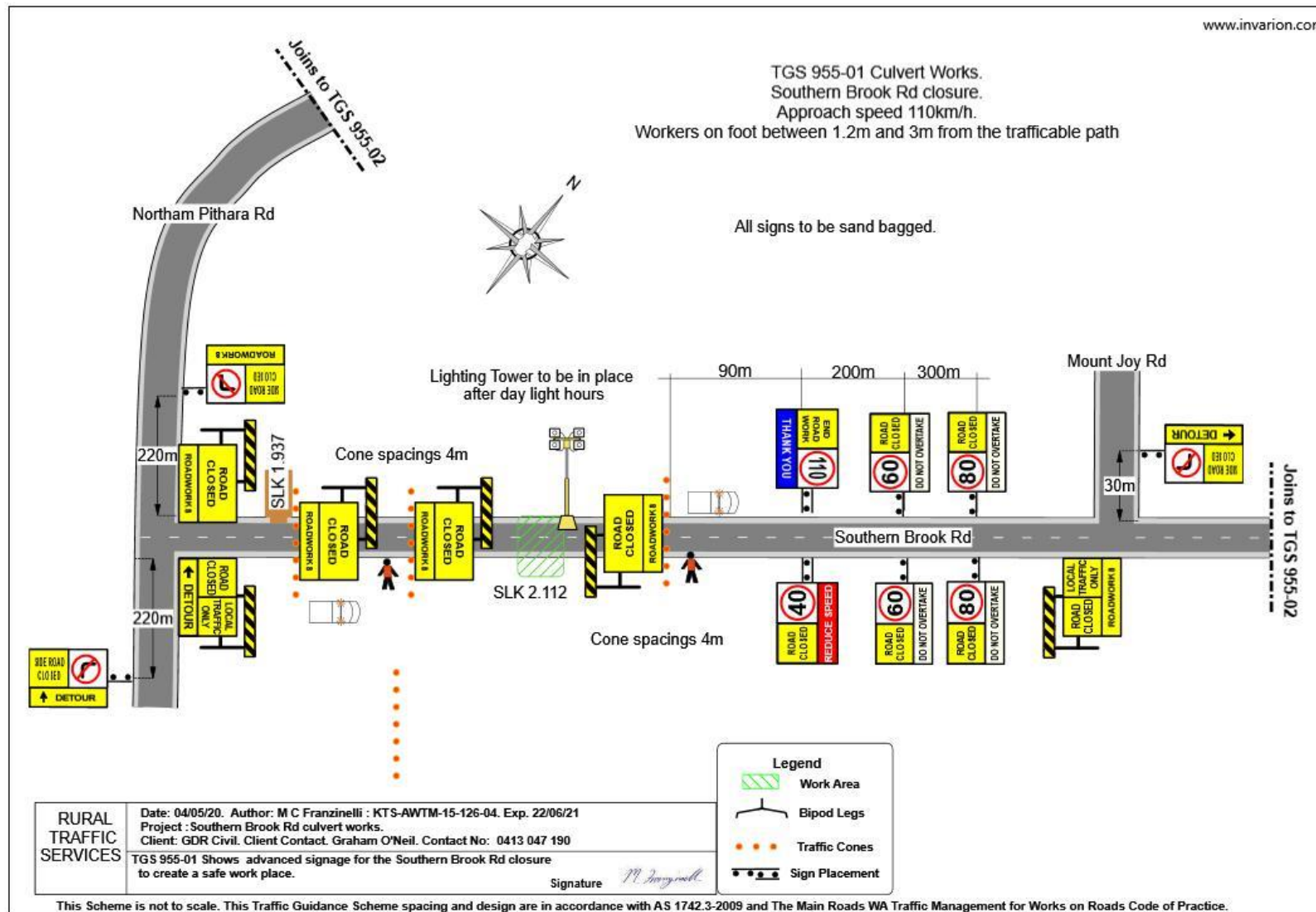


TGS 955-01 Culvert Works.
Southern Brook Rd closure.
Approach speed 110km/h.
Workers on foot between 1.2m and 3m from the trafficable path

All signs to be sand bagged.



This Scheme is not to scale. This Traffic Guidance Scheme spacing and design are in accordance with AS 1742.3-2009 and The Main Roads WA Traffic Management for Works on Roads Code of Practice.

TGS 955-02 Culvert Works.
 Southern Brook Rd closure.
 Approach speed 110km/h.
 Workers on foot between 1.2m and 3m from the trafficable path

